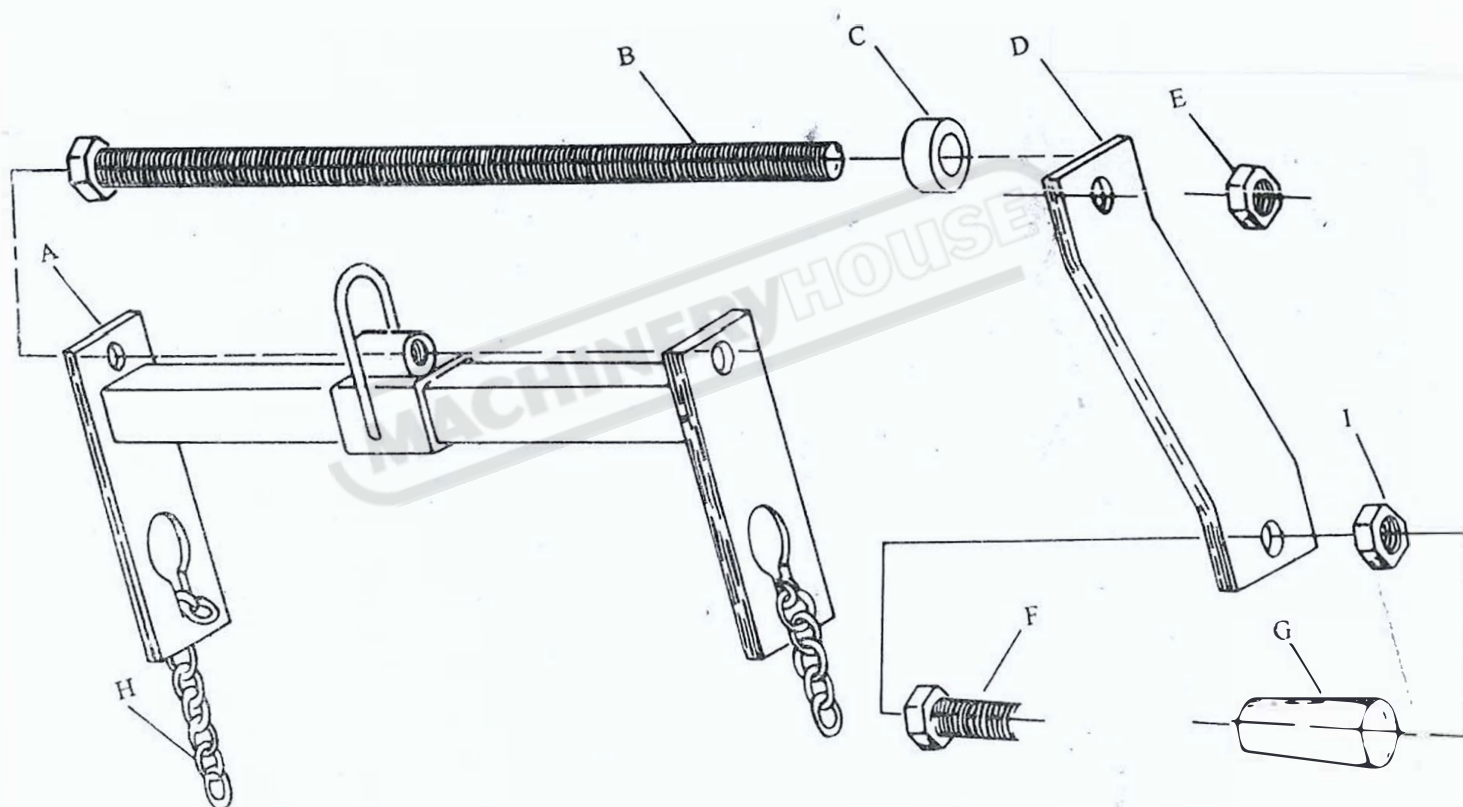


- 1). Insert part (B) Threaded Rod thru 15mm hole in either end of part(A) Main Body passing thru M12 Rod Coupler and other end of Main Body.
- 2). Place part (C) Spacer over the end of part (B) Thredade Rod which does not have the M12 nut welded to it.
- 3). Screw part (D) Crank Arm approximately M12 onto the same end of the Threaded Rod as the Spacer . Now screw part (E) M12 nut onto Threaded Rod. Then turn M12 nut clockwise while turning Crank Arm counter clockwise so as to lock Crank Arm into position.
- 4). Take part (F) M 10 × 30 bolt and pass through part (G) Crank Handle and attach to Crank Arm using (I) M 10 nut.



QTY	KEY	DESCRIPTION
1	A	Main Body
1	B	M 12 Threaded Rod
1	C	Spacer
1	D	Crank Arm
1	E	M 12 Nut
1	F	M 10 × 30 Bolt
1	G	Crank Handie
2	H	520m/m Chain
1	I	M10 Nut